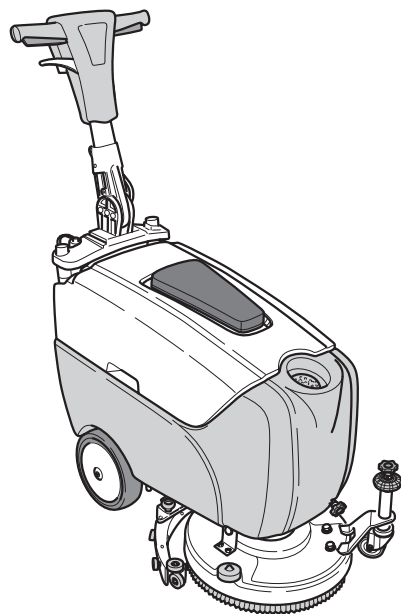




CATALOGO RICAMBI
SPARE PARTS CATALOGUE
MANUEL DES PIECES



R A P I D 1 5

MODELLI

E 38 (230V) - Da matr. 051.0713.0131

NOTE

Per la funzionalità del servizio ricambi si consiglia di tenere a magazzino gli articoli contrassegnati sul presente catalogo secondo il criterio d'indispensabilità sotto citato

In order to assure a correct spare parts service, we advise you to keep the indicated elements on stock. Estimated importance of the spares as indicated hereunder

Um die Lieferung von Ersatzteilen zu gewährleisten, ist es ratsam, die in diesem Katalog gekennzeichneten Teile nach der angeführten Wichtigkeitseinstufung zu bevorraten.

Afin d'assurer le bon fonctionnement du service après-vente, nous vous conseillons de tenir en stock les éléments contresignés. L'importance des pièces est indiqués comme suit :

● = Suggestito Advisable Empfohlen Conseillé



I ricambi originali **Wirbel** permettono di mantenere inalterato nel tempo le caratteristiche d'origine della vostra lavasciugapavimenti aumentandone la sicurezza e riducendone i tempi di assistenza. La qualità di un ricambio originale viene garantita da rigidi e continui controlli di qualità; inoltre tutti i nostri ricambi sono concepiti nel rispetto dell'ambiente, evitando l'utilizzo di sostanze vietate e dannose.



N'utilisez que des pièces détachées originelles **Wirbel**, elles permettent de maintenir dans le temps les caractéristiques originelles de l'autolaveuse, en garantissent la sécurité et réduisent le temps nécessaire aux réparations. La qualité des pièces détachées est garanti par des contrôles très rigides. Elles sont produites dans le respect de l'environnement et sans l'utilisation de matériaux interdit ni dangereux.



To assure the correct functioning during many years, only use original **Wirbel** spare parts. They guarantee security and reduce reparation time. Ghibli spare parts quality is guaranteed through rigid control, furthermore they are developed respecting environment avoiding the use of any forbidden or dangerous substance.

TAV. N° R.1502

Rapid 15 E38 assembly

Pag. 1

230V AC version

This exploded view diagram illustrates the assembly of the Rapid 15 E38, a 230V AC version. The components are numbered as follows:

- 1**: Main frame assembly with two large wheels.
- 2**: A small rectangular component, likely a battery or control unit.
- 3**: A small cylindrical component, possibly a pin or connector.
- 4**: A small rectangular component, likely a battery or control unit.
- 5**: A small cylindrical component, possibly a pin or connector.
- 6**: A small rectangular component, likely a battery or control unit.
- 7**: A small rectangular component, likely a battery or control unit.
- 8**: A small cylindrical component, possibly a pin or connector.
- 9**: A circular component, likely a disc or plate.
- 10**: A circular component, likely a disc or plate.
- 11**: A curved component, likely a hose or cable.
- 12**: A small rectangular component, likely a battery or control unit.
- 13**: A circular component, likely a disc or plate.
- 14**: A small rectangular component, likely a battery or control unit.
- 15**: A small cylindrical component, possibly a pin or connector.
- 16**: A small rectangular component, likely a battery or control unit.
- 17**: A small cylindrical component, possibly a pin or connector.
- 18**: A small rectangular component, likely a battery or control unit.
- 19**: A small cylindrical component, possibly a pin or connector.
- 20**: A small rectangular component, likely a battery or control unit.

Dashed lines indicate the assembly path and alignment of the components.

TAV. N° R.1502

[illegible]

Std. = First equipment Opt. = Optional

TAV. N° R.1502

Rapid 15 E38 assembly

Pag. 2

230V AC version

This exploded view diagram illustrates the assembly of the Rapid 15 E38, 230V AC version. The components are numbered as follows:

- 21**: Main vertical support structure.
- 22**: Small pin or fastener.
- 23**: Trigger gun assembly.
- 24**: Small pin or fastener.
- 25**: Horizontal support arm.
- 26**: Pin or fastener for the support arm.
- 27**: Pin or fastener for the support arm.
- 28**: Small pin or fastener.
- 29**: Pin or fastener for the wheel assembly.
- 30**: Pin or fastener for the wheel assembly.
- 31**: Pin or fastener for the base.
- 32**: Pin or fastener for the base.
- 33**: Pin or fastener for the base.
- 34**: Pin or fastener for the base.
- 35**: Pin or fastener for the base.
- 36**: Pin or fastener for the base.
- 37**: Small pin or fastener.
- 38**: Trigger gun assembly.
- 39**: Power cord.

The diagram shows the trigger gun (23) being attached to the main support (21) using pins (22, 24). The support arm (25) is attached to the main support (21) using pins (26, 27). The base (31) is attached to the main support (21) using pins (32, 33, 34, 35, 36). The wheel assembly (29, 30) is attached to the base (31) using pins (29, 30). The trigger gun (38) is attached to the base (31) using pins (37, 38). The power cord (39) is shown separately.

TAV. N° R.1502

[illegible]

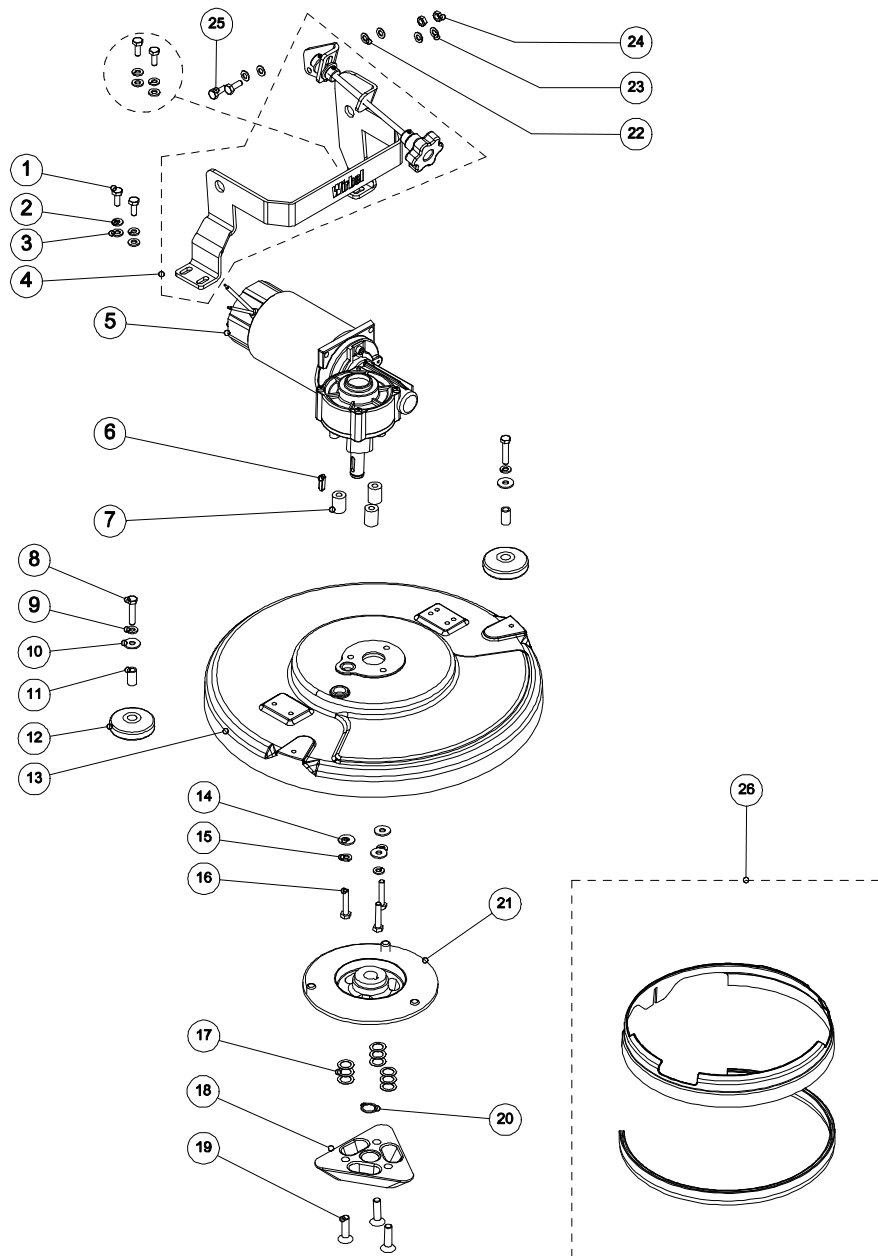
TAV. N° F.1505

Chassis assembly	22.0347.00	230V AC version
<p>This technical diagram illustrates the exploded view of a chassis assembly. The components are numbered 1 through 32. The assembly includes a main frame (1), a large wheel (2), a motor unit (3), a control box (4), a power supply unit (5), a drive shaft (6), a motor (7), a gear assembly (8), a sensor or switch (9), a cable (10), a bracket (11), a connector (12), a plug (13), a cable (14), a wheel (15), a bracket (16), a sensor or switch (17), a cable (18), a bracket (19), a cable (20), a bracket (21), a cable (22), a sensor or switch (23), a cable (24), a bracket (25), a cable (26), a bracket (27), a cable (28), a bracket (29), a cable (30), a bracket (31), and a cable (32).</p>		

TAV. N° F.1505

[illegible]

TAV. N° F.1508



TAV. N° F.1508

[illegible]

TAV. N° F.1508

Brush motor assembly	22.0386.00 - Pag. 2	230V AC version
----------------------	---------------------	-----------------

This technical diagram illustrates the exploded view of a brush motor assembly. The components are numbered as follows:

- 27**: A small cylindrical component, likely a pin or clip.
- 28**: A circular plate with multiple holes, possibly a filter or a base plate.
- 29**: A circular plate with multiple holes, similar to 28 but with a different internal structure.
- 30**: A small circular component, possibly a washer or a small plate.
- 31**: A small rectangular component, possibly a bracket or a small plate.
- 32**: A small rectangular component, possibly a bracket or a small plate.
- 33**: A small cylindrical component, likely a pin or clip.
- 34**: A small cylindrical component, likely a pin or clip.
- 35**: A small cylindrical component, likely a pin or clip.
- 36**: A small cylindrical component, likely a pin or clip.
- 37**: A small rectangular component, possibly a bracket or a small plate.
- 38**: A small rectangular component, possibly a bracket or a small plate.
- 39**: A small rectangular component, possibly a bracket or a small plate.
- 40**: A small rectangular component, possibly a bracket or a small plate.
- 41**: A small rectangular component, possibly a bracket or a small plate.
- 42**: A small cylindrical component, likely a pin or clip.
- 43**: A small cylindrical component, likely a pin or clip.
- 44**: A small cylindrical component, likely a pin or clip.

The diagram shows the assembly of these components into a larger unit, with a dashed line indicating the vertical alignment of the circular plates (28, 29, 30) and the main motor housing (41).

TAV. N° F.1508

[illegible]

TAV. N° R.1511

Solution tank assembly	22.0411.00	230V AC version

TAV. N° R.1511

[illegible]

TAV. N° R.1514

Handle set assembly	22.0400.00	230V AC version

TAV. N° R.1514

[illegible]

TAV. N° R.1516

Recovery Tank Assembly	22.0147.07
<p>This technical diagram illustrates the assembly of a recovery tank. The main unit, labeled 1, is a rectangular tank with a handle on the right side. Various components are shown being attached to it: a drain plug (2) and a hose connection (3) are located on the bottom front. A hose (6) is connected to the side, featuring a clamp (5) and a connector (4). The top of the tank has a large opening where a funnel (11) and a filter (12) are installed. A cap (13) is shown above the filter, and a gasket (14) is positioned between the filter and the tank. A ring (15) is shown separately. A handle (16) is attached to the top, and a lid (17) is shown above it. A small cap (18) is shown being inserted into the top of the tank. Two circular insets provide detailed views of the hose connections: one at the top (10) and one at the bottom (7).</p>	

TAV. N° R.1516

[illegible]

TAV. N° F.1517

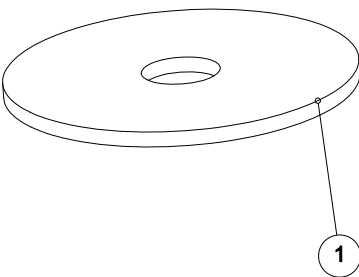
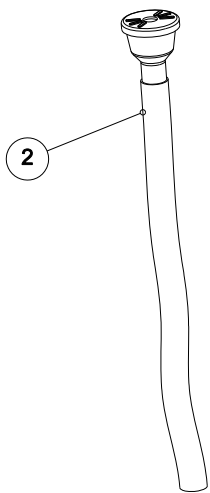
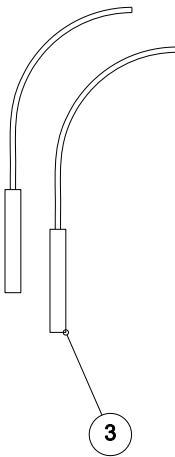
Squeegee assembly	22.0134.00	
-------------------	------------	--

This technical drawing is an exploded view of a squeegee assembly. It features three main curved components: a top squeegee blade (1), a middle support or guide rail (3), and a bottom squeegee blade (12). The assembly is held together by various fasteners including screws (2, 4, 5, 6, 7, 8, 9, 10, 11, 13, 14, 16, 17, 18, 19, 20), washers (15), and a central hub or connector (15). The diagram shows the relative positions and assembly sequence of these parts.

TAV. N° F.1517

[illegible]

Std. = First equipment Opt. = Optional

Accessories and spare parts		
 <p>1</p>	 <p>2</p>	 <p>3</p>

[illegible]



Ghibli S.p.a
Via Circonvallazione, 5
27020 Dorno (PV) ITALY

Tel. +39 0382 848811
Fax +39 0382 84668
<http://www.ghibli.it>
e-mail: info@ghibli.it

